





*Introducing the latest revolutionary printer, the U2-Diesel.
The integration of quality, efficiency, and cost saving.*



Compact Size with 3.5-inch LCD Screen

Feature a larger screen to provide a better user experience, while maintaining its compact body size for hassle-free installation and easy integration.



Zero-Maintenance

The ink cartridge design eliminates unnecessary printhead services; it is truly zero-maintenance and has drastically decreased your total cost of ownership.



Pocket-sized Remote Keypad

Handy and compact remote keypad with comprehensible design for easy operation.



Friendly UI & Intelligent Dashboard

Simple yet elegant user interface for easy operation. The intelligent dashboard design monitors the printer status and provides real-time system notifications.



Automatic Nozzle Check Design

Precise nozzle check function allows you to easily identify which specific nozzle is malfunctioned or damaged.



USB 2.0 Compatible

Multiple functions including software update, data backup and stand-alone USB keyboard operation.



New Dust Cover Design

Help to protect cartridge from getting damaged in dusty environment.



New Anti-Shock Mechanism Design

Eliminate the unexpected damage to your printer with ANSER's unique protective design.



Network Management (Optional)

Control multiple U2-Diesel by connecting them with USB Wi-Fi (uPad) or RS485 cable (PC).



7-inch uPad (Optional)

Control the U2-Diesel over Wi-Fi by using the uPad, which enhances the operation of the printer with multi-touch function.

SAVING
INKNOVATION





The integration of quality, efficiency, and cost saving.
Introducing the latest revolutionary printer, the U2-Diesel.

Comparison Items	U2-Diesel Ink Jet Printer	LCP Large Character Printer
1. Lower printer cost	✓	-
2. Higher print resolution	✓	-
3. Higher print speed	✓	-
4. No ink leakage	✓	-
5. No-maintenance	✓	-
6. No consumable parts	✓	-
7. No technician required	✓	-
8. Lower price-per-print	✓	-
9. Lower total cost of ownership	✓	-

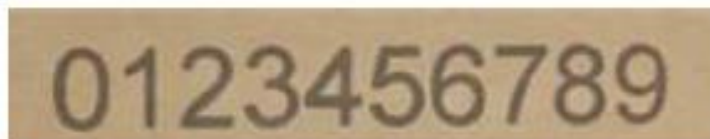
U2™
DIESEL

SCS
INKJET CODING SOLUTION
PT. SUMBER CIPTA SOLUSI

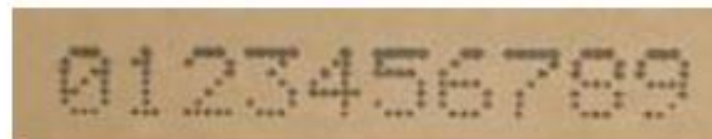


Print more, Save more !

- Equivalent Print to 5-Gallon Ink Barrel
- Exclusive Ink Formulation
- Cost-effective 420 Bulk Ink Solution



Printed by U2-Diesel



Printed by Large Character Printer



U2-Diesel Specifications:

Display	3.5" Color LCD with LED backlight
User-Interface	Simple and easy-to-use operating system
Input Device	Pocket-sized IR remote keypad
Available Languages	English, Japanese, French, German, Spanish, Portuguese, Russian, Korean, Italian, Turkish, Hungarian, Slovak, Czech, Swedish, Romanian, Serbian, Bulgarian, Chinese (Traditional & Simplified)
LED Indicators	Alarm, ink low, print, run, remote on/off
Print Engine	Hewlett-Packard Thermal Ink Jet technology
Print Resolution & Print Speed	600 x 300 dpi (76.2 m/min) Print quality is resolution & speed dependent.
Print Distance	Recommended 6mm
Print Height	Up to 4 lines and 12.7mm (0.5"). Selectable font size from 2.7mm, 3.6mm, 5.5mm, 8mm, 10mm, 12.7mm
Print Capability	Alphanumeric, logos, date/time, shift code, counter, lot box code
Barcodes	EAN8, EAN13, EAN14, EAN128, UPCA, UPCE, CODE39, CODE128, TF14 (SCC-14), NVE18 (SSCC-18), C25INTER, CODABAR, PDF417, DATAMATRIX, QR CODE
Electrical Requirements	AC 100V~240V, 50/60HZ
Weight	0.49kg (1.08 lb.) - excluding cartridge and bracket
Dimensions (L/W/H)	114x76x60 (mm)
Mounting Orientation	Horizontal or downside
Message Storage Capacity	Store up to 999 messages
Operating Temperature	5°C – 40°C (41°F – 104°F)
Data Interface	RS485 & USB port

Optional Accessories:

Encoder	Provide high print quality on unstable conveyor
Photocell	Provide more reliable and precise sensing parameter
Alarm Kit	Alert users in the event of an incident



SCS Inkjet Coding Solution
 PT. Sumber Cipta Solusi
 Komplek Daan Mogot Baru
 Jl. Jimbaran Blok LA 14 No. 6

Phone: 021 544 1932 / 021 540 8937
 Fax: 021 540 8937
 Email : alexanderglenn@scsmarking.com

